

# SWITCHABLE MAGNETS

General purpose holding magnets for demanding industrial and architectural applications.



Electro-magnets  
**Energise to hold**



Electro-permanent magnets  
**Energise to release**

## Ideal for use in:

- Machine tools
- Door locking / holding
- Feeder mechanisms
- Short stroke / high force operations
- Textile machinery
- Automation
- Office machines
- Grill locking
- Packaging machinery
- Remote hold / release

# Electro-magnets: Energise to hold

Electrical current is required to turn the magnet ON. Power is removed to turn the magnet ON.



## Magnetic Pull (kg)

Air gap (mm)	Product diameter (mm)				
	25	30	40	50	65
0.00	11.3	25.3	57.5	109.7	167.7
0.09	3.4	9.4	28.9	63.9	94.9
0.18	1.9	5.0	15.3	40.3	55.4
0.27	1.1	3.2	9.7	26.8	34.7
0.36	0.7	2.1	5.9	19.0	23.7
0.59	0.4	1.1	3.2	10.0	12.9
1.00	0.2	0.5	1.5	4.8	6.4
1.59		0.3	0.8	2.4	3.1
2.00		0.2	0.4	1.0	1.5
4.00			0.3	0.6	1.0

## Details

Sturdy zinc plated cylinder, passivated with body mounting  
High-quality permeable iron for low remanence  
Armature plates to suit

**Operating voltage** 12, 24, 24VDC & 214VDC (240VAC Rectified plug connector)

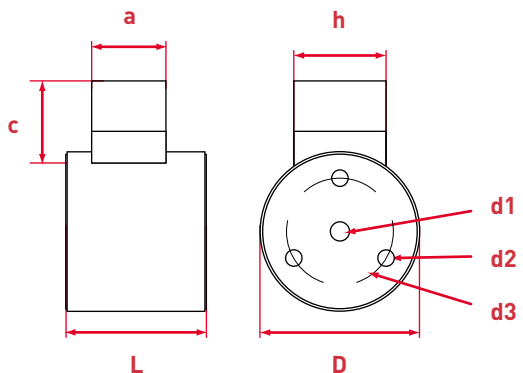
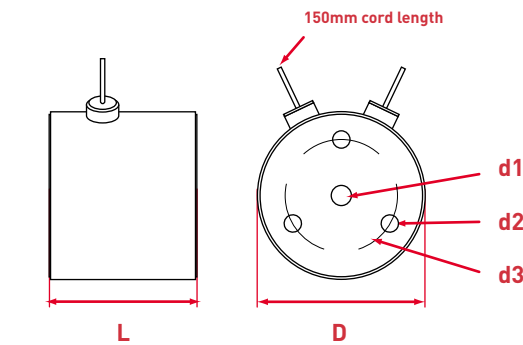
**Connector options** Terminal block, free leads, plug connector

**Mountings** Machined holes in rear face of magnet

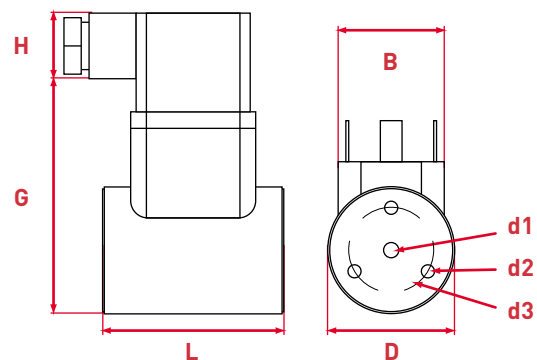
**Finish** Bright zinc plated with machined face

**Holding Force** Up to 3700N

## Dimensions

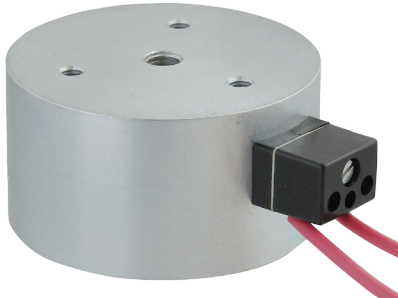
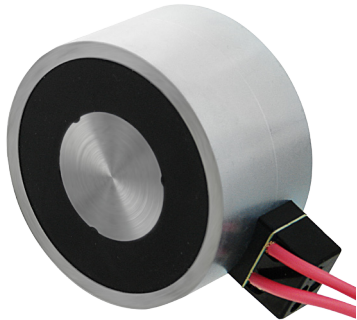


Dimension	Product diameter (mm)				
	25	30	40	50	65
D	25	30	40	50	65
L	20	24	27	30	35
a			13.5	13.5	13.5
h			16	16	16
B				30	30
G				63	78
H				36	36
d1	M4	M5	M5	M5	M8
d2	M3	M3	M4	M4	M5
d3	15	18	26	34	40



# Electro-magnets: Energise to release

Electrical power is required to turn the magnet OFF. Power is removed to restore the magnet to ON.



## Magnetic Pull (kg)

Air gap (mm)	Product diameter (mm)	
	35	50
0.00	28.5	47.1
0.09	9.8	39.8
0.18	5.4	26.4
0.27	3.7	19.0
0.36	3.1	13.1
0.59	1.7	11.2
1.00		5.4
1.59		3.2

## Details

**Sturdy zinc plated cylinder, passivated with body mounting**  
**High-quality permeable iron for low remanence**  
**Armature plates to suit**

**Operating voltage** 24VDC & 214VDC (240VAC Rectified plug connector)

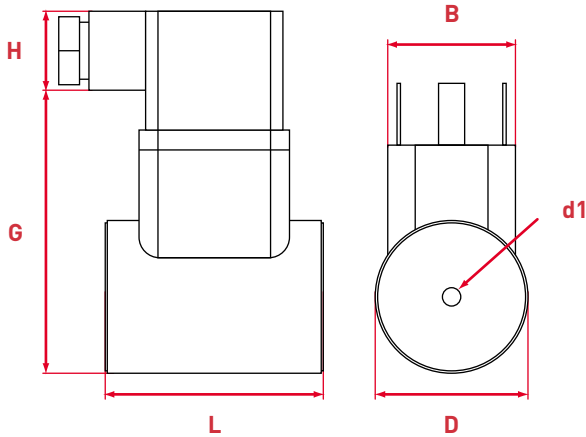
**Connector options** Terminal block, free leads, plug connector

**Mountings** Central machined hole in rear face of magnet

**Finish** Bright zinc plated with machined face

**Holding Force** Up to 3700N

## Dimensions



Dimension	Product diameter (mm)	
	35	50
D	35	50
L	48	63
B	30	30
G	45	63
H	36	36
d1	M5	M5

# About Eclipse Magnetics

From our base in Sheffield we manufacture and supply over 20,000 magnets and magnetic products.

Our range includes magnet materials, pot magnets, magnetic tools, magnetic chucks, lifting magnets, magnetic filters, magnetic separators, switchable magnets and handling systems.

We supply from stock and are also able to produce magnets and products engineered to your specifications.



## Other products available from Eclipse Magnetics



Magnet materials



Lifting magnets



Pot magnets



Magnetic chucks



Magnetic tools



Metal detectors



Magnetic filters



Magnetic separators

Call **0114 225 0600** to make an enquiry